

PO Box 7987
Edmond, OK 73083
14710-A Metro Plaza Blvd
Edmond, OK 73013



O: 877-234-6558

F: 405-607-0624

info@2by2ind.com



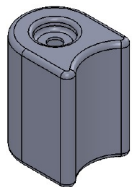
PORTABLE 15' GAGA BALLPIT

INSTALLATION INSTRUCTIONS
AND MATERIALS LIST

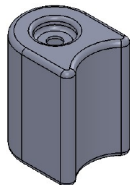
PO Box 7987
Edmond, OK 73083
14710-A Metro Plaza Blvd
Edmond, OK 73013



O: 877-234-6558
F: 405-607-0624
info@2by2ind.com



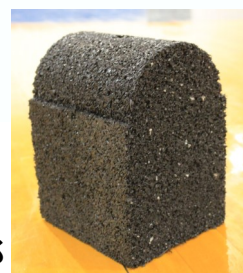
(2) 6" FILLER END CAPS



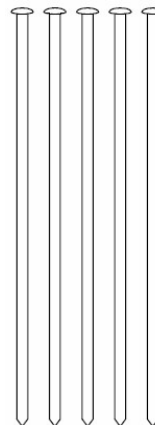
(23) BORDER TIMBERS



(12) 6" PIT PADS



(12) 28" SPIKES



Here are seven easy steps to complete the installation of your new 15' Portable GaGa Ball Pit from 2by2 Industries:

1. In a large, flat area, locate the center point of your future GaGa Ball Pit. Mark that spot for use with Step 2.
2. From that spot, attach one end of a rope, string, or any easy fabric. This string needs to be approximately 7'-6" long. From there you will stretch it out and walk in a large circle. This gives you the approximate size of the GaGa Ball Pit.
3. You will start with placing the bottom row of border timbers (12 total) and create a large circle. Each junction of the borders needs to be placed on top of the 6" Pit Pads. Make sure the hole in the Pit Pad is facing up. Gently run a 28" spike through the border and into the Pit Pad.
4. Once you have the first row in a circle, add the second row of borders on top of the first row. You will have to remove and re-insert the spike in place to allow it to go through the ends of four borders.
5. You will notice that there are only 11 borders for the top row, this is to allow an entry/exit point. Instead of using a border timber in that gap, you will use the 6" filler end caps to fill the spaces. This gives the GaGa Ball Pit a finished look.
6. Once fully assembled, walk around the circle and correct any pivot points that might not look like a perfect circle. The spikes will rest inside the Pit Pads and should provide stability and strength.
7. Enjoy your new Portable GaGa Ball Pit!