

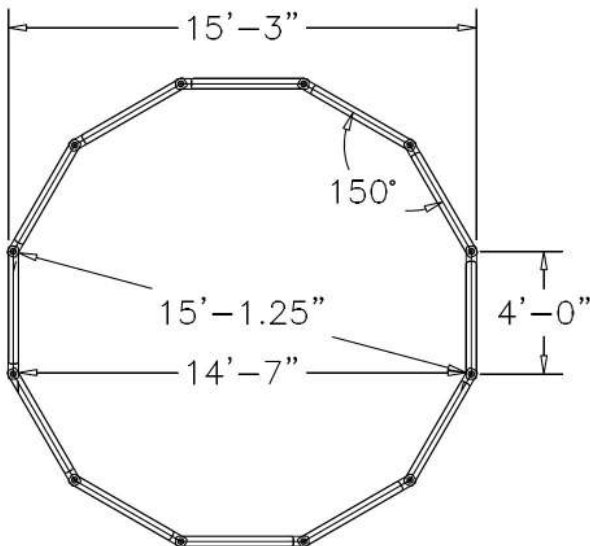
PO Box 7987
Edmond, OK 73083
14710-A Metro Plaza Blvd
Edmond, OK 73013



O: 877-234-6558

F: 405-607-0624

info@2by2ind.com



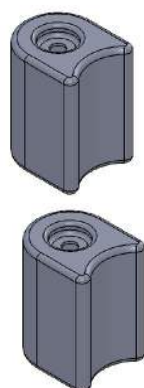
15' HIGH-WALL GAGA BALL PIT

INSTALLATION INSTRUCTIONS AND MATERIALS LIST

PO Box 7987
Edmond, OK 73083
14710-A Metro Plaza Blvd
Edmond, OK 73013



O: 877-234-6558
F: 405-607-0624
info@2by2ind.com



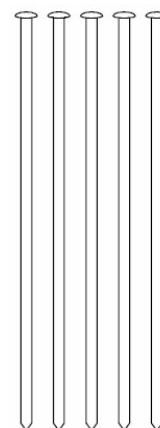
**(2) 6" FILLER
END CAPS**



(23) 12" BORDER TIMBERS

(12) 8" BORDER TIMBERS

(12) 42" SPIKES



Here are EIGHT easy steps to complete the installation of your new 15' High-Wall GaGa Ball Pit from 2by2 Industries:

1. In a large, flat area, locate the center point of your future GaGa Ball Pit. Partially drive one of the provided spikes in that spot (approx. 6").
2. From that spike, attach one end of a rope, string, or any easy fabric. This string needs to be approximately 7'-6" long. From there you will stretch it out and walk in a large circle. This gives you the approximate size of the GaGa Ball Pit.
3. You will start with placing the bottom row of 12" border timbers (12 total) to create a large circle. Use the spikes to hold them in place, but **DO NOT** hammer them in.
4. Once you have the first row in a circle, add the second row of 8" borders (12 total) on top of the first row. You will have to remove and re-insert the spike in place to allow it to go through the ends of four borders.
5. Now that you've got two full rows of borders stacked, add the final row of 12" borders (11 total) to the pit wall.
6. You will notice that there are only 11 borders for the top row, this is to allow an entry/exit point. Instead of using a border timber in that gap, you will use the 6" filler end caps to fill the spaces. This gives the GaGa Ball Pit a finished look with an easy access opening.
7. Once fully assembled, walk around the circle and correct any pivot points that might not look like a perfect circle. Hammer the spikes until they rest within the countersunk area of the borders.